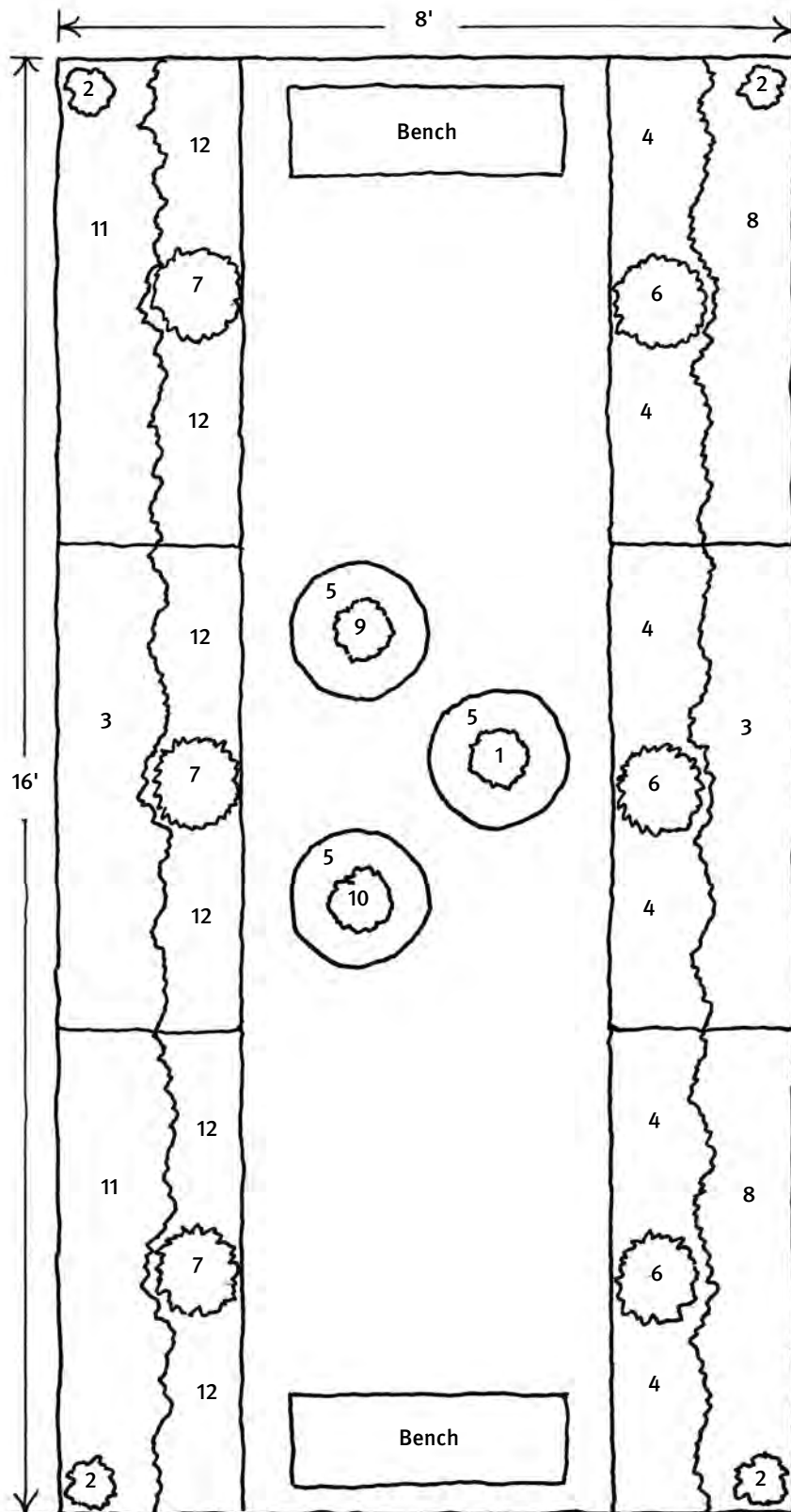


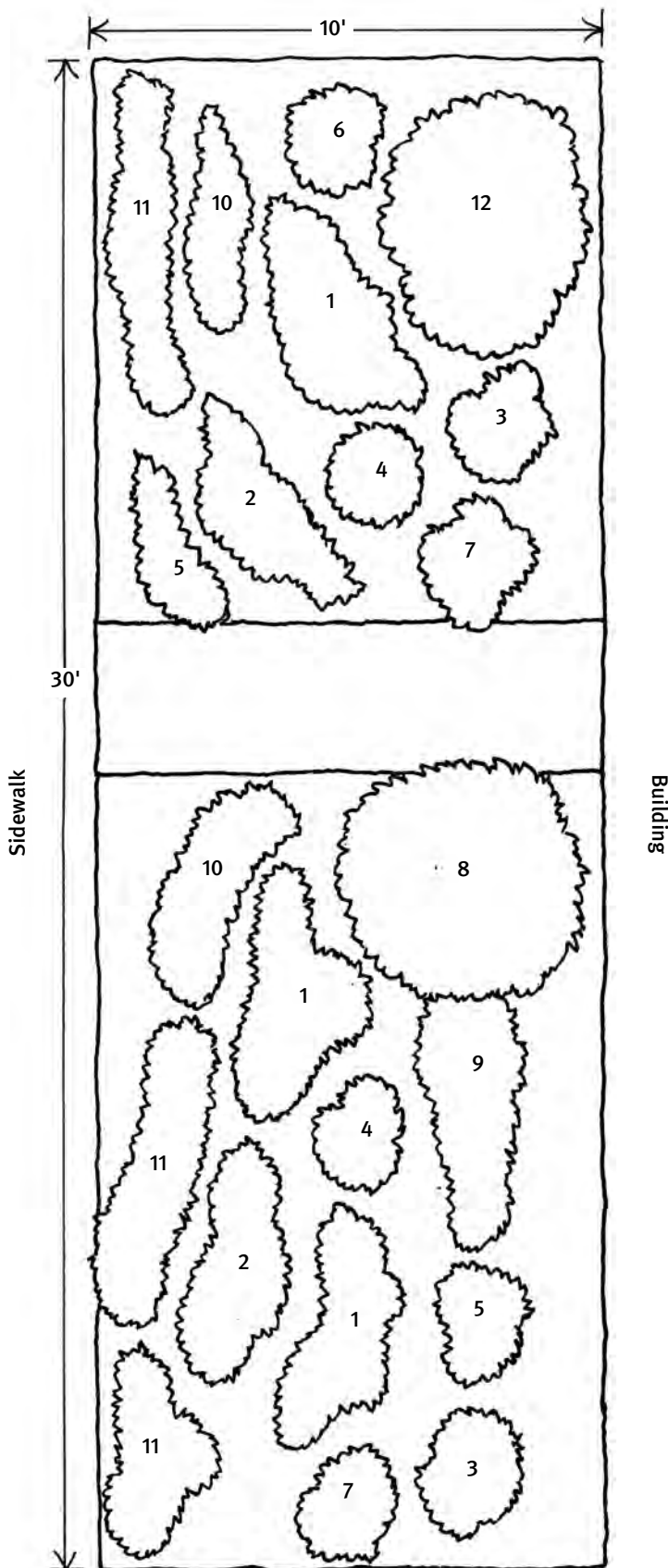
A Fragrant Garden for Children



The plants for this garden

- 1 *Aloysia citriodora* | lemon verbena
1 plant; can be grown from stem cutting
- 2 *Dolichos lablab* | hyacinth bean vine
3 seeds per trellis (12 total)
- 3 *Heliotropium arborescens* | heliotrope
3 plants per bed (6 total)
- 4 *Lobularia maritima* | alyssum
6 small plants (plugs) per bed (18 total)
- 5 *Mentha × piperita* 'Chocolate'
chocolate mint
3 plants per container (9 total) or 5 cuttings
per container (15 total)
- 6 *Muscari armeniacum* | grape hyacinth
9 bulbs per cluster (27 total)
- 7 *Narcissus jonquilla* | dwarf jonquil
7 bulbs per cluster (21 total)
- 8 *Pelargonium fragrans*
nutmeg-scented geranium
3 plants per container (6 total);
can be grown from stem cuttings
- 9 *Salvia elegans* | pineapple sage
1 plant
- 10 *Senna* (syn. *Cassia*) *didymobotrya*
popcorn senna
1 plant
- 11 *Tagetes patula* | French marigold
5 plants per bed (10 total); easily grown
from seed saved year to year
- 12 *Viola tricolor* | Johnny jump-up
6 small plants (plugs) per bed (18 total)

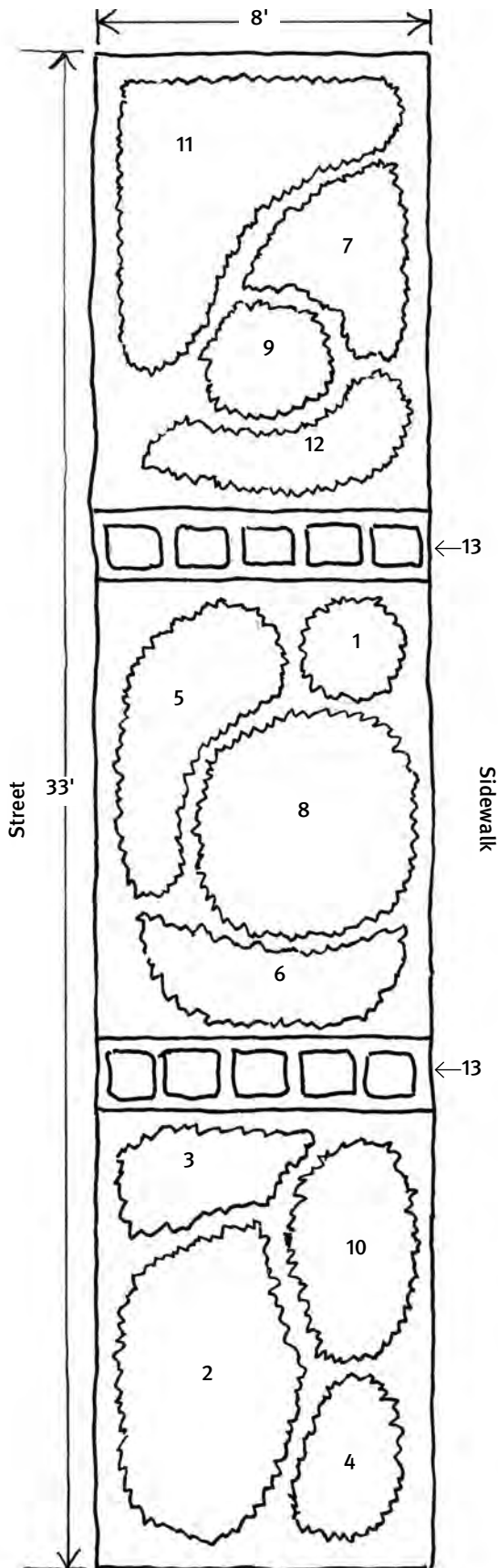
A Fragrant Front Yard Garden



The plants for this garden

- 1 *Agastache aurantiaca* 'Coronado'
orange hummingbird mint
3 groups of 3 to 5 plants (9 to 15 total)
- 2 *Artemisia* 'Powis Castle' | wormwood
1 plant per bed (2 total)
- 3 *Asclepias incarnata*
swamp milkweed
1 plant per bed (2 total)
- 4 *Cosmos atrosanguineus*
chocolate cosmos
1 plant per bed (2 total)
- 5 *Dianthus gratianopolitanus*
cheddar pink
3 plants per bed (6 total)
- 6 *Dictamnus albus* | gas plant
1 plant per bed (2 total)
- 7 *Echinacea purpurea* 'Fragrant Angel'
purple coneflower
1 to 3 plants per bed (6 to 9 total)
- 8 *Hamamelis mollis*
Chinese witch-hazel
1 plant
- 9 *Rudbeckia subtomentosa*
sweet rudbeckia
3 plants
- 10 *Salvia officinalis* | sage
3 to 5 plants per bed (6 to 10 total)
- 11 *Thymus vulgaris* | garden thyme
5 or 6 plants per bed (15 to 18 total)
- 12 *Viburnum × juddii* | Judd viburnum
1 plant

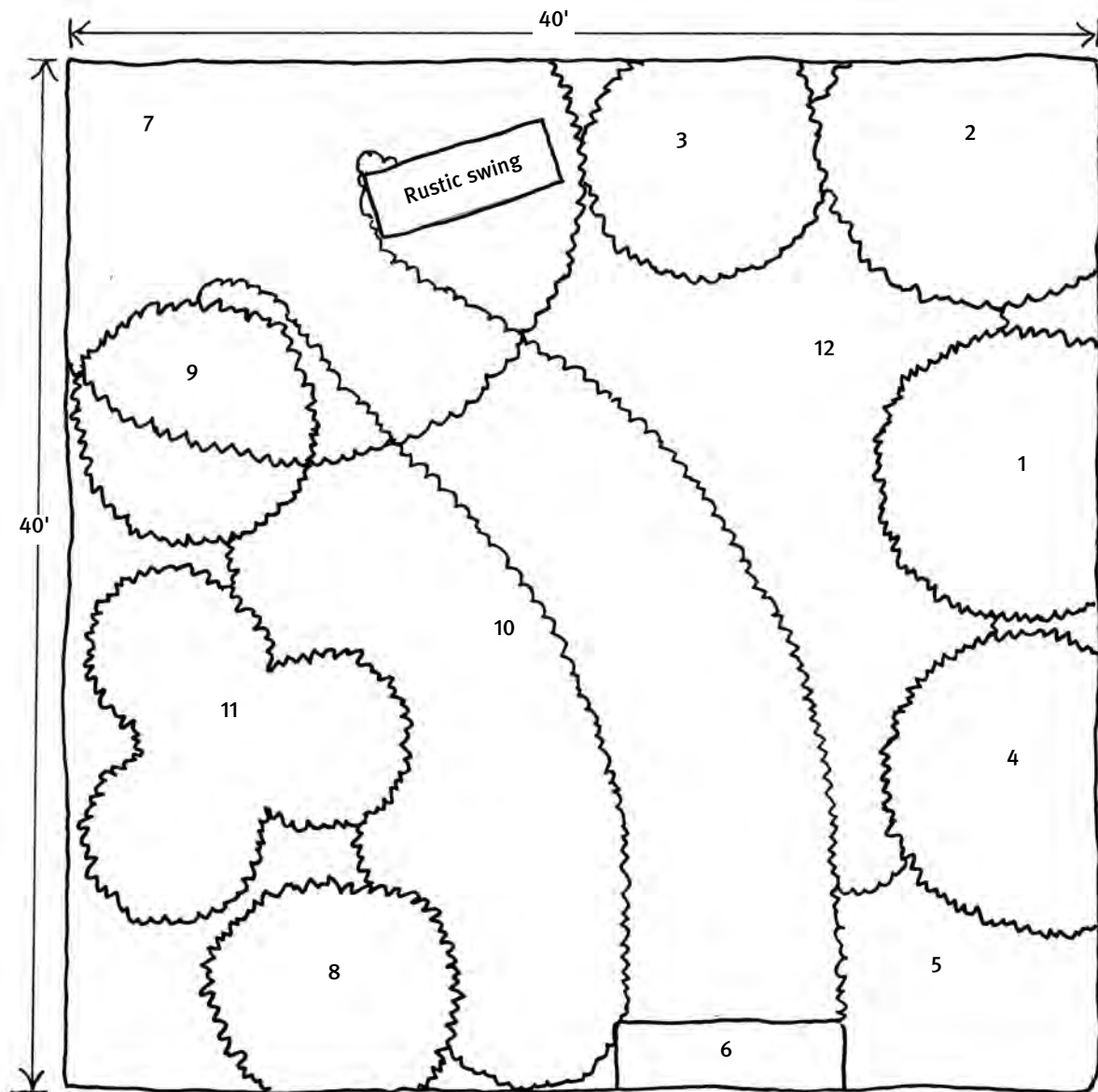
A Wildlife-Friendly Fragrant Hell Strip



The plants for this garden

- 1 *Agastache rupestris*, sunset hyssop
1 plant; readily self-seeds
- 2 *Caryopteris × clandonensis* 'Petit Bleu'
bluebeard
3 plants
- 3 *Dianthus gratianopolitanus* 'Tiny Rubies'
cheddar pink
5 plants; easily grown from seed
- 4 *Hemerocallis lilioasphodelus* | lemon daylily
2 plants
- 5 *Lavandula angustifolia* 'Hidcote'
English lavender
5 plants; take softwood cuttings to increase stock and replace older plants.
- 6 *Lobularia maritima* 'Royal Carpet' | alyssum
8 plants; easily grown from seed
- 7 *Monardella villosa* | coyote mint
1 plant; take softwood cuttings to increase stock and replace older plants.
- 8 *Rosa virginiana* | Virginia rose
1 plant
- 9 *Salvia farinacea* 'Victoria Blue'
mealycup sage
3 plants
- 10 *Santolina chamaecyparissus* 'Nana'
lavender cotton
3 plants
- 11 *Sporobolus heterolepis* | prairie dropseed
5 plants
- 12 *Tagetes tenuifolia* 'Tangerine Gem'
signet marigold
5 plants; easily grown from seed
- 13 *Thymus serpyllum* | creeping thyme
32 plants

A Fragrant Native Woodland Garden

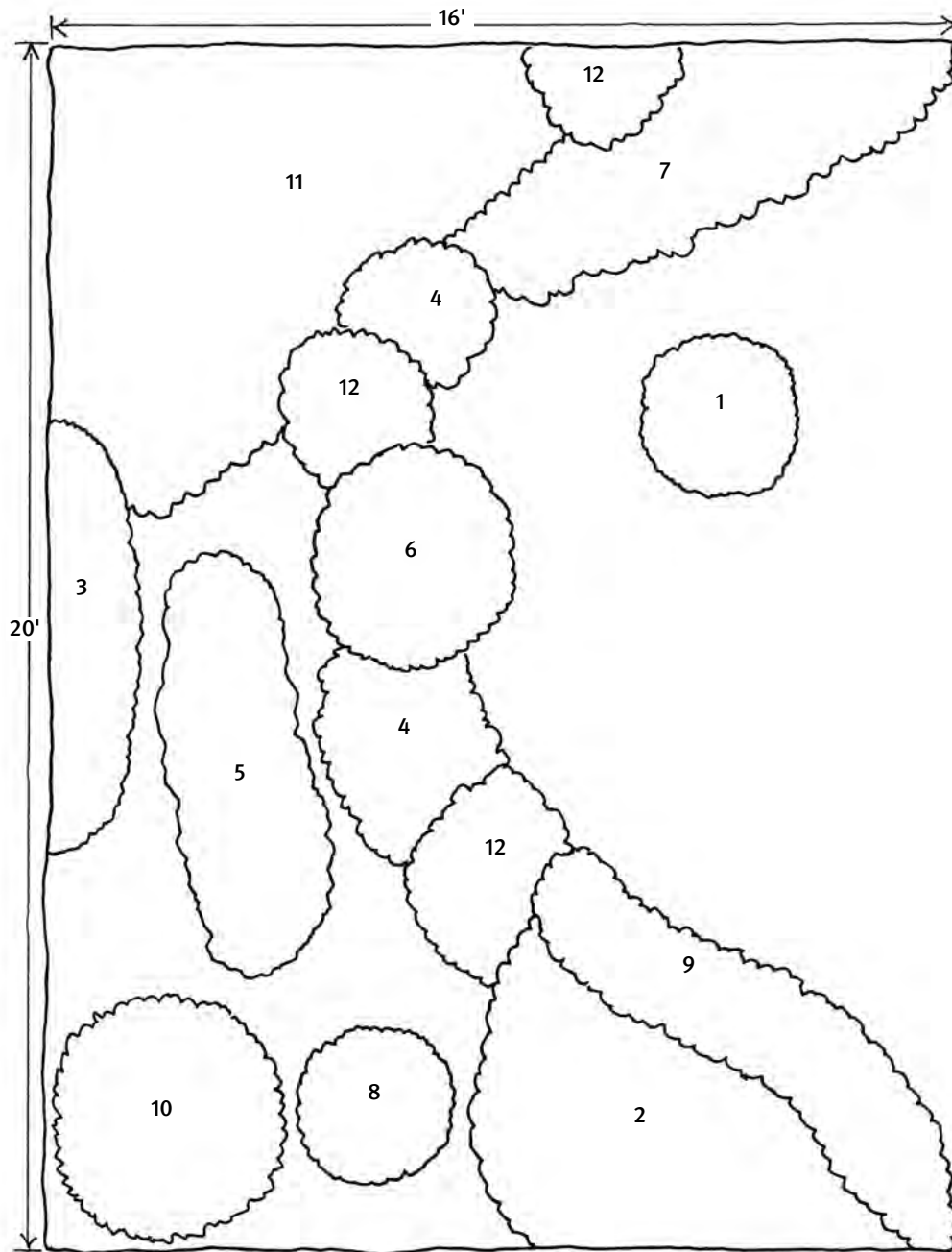


The plants for this garden

Unless otherwise noted, you will need 1 of each tree, shrub, and vine.

- | | |
|--|---|
| 1 <i>Calycanthus floridus</i> Carolina allspice | 9 <i>Lindera benzoin</i> spicebush |
| 2 <i>Chionanthus virginicus</i> white fringe tree | 10 <i>Phlox divaricata</i> woodland phlox, wild sweet William
Start with 12 or more plants. They readily self-seed. |
| 3 <i>Clethra alnifolia</i> summersweet, sweet pepperbush | 11 <i>Rhododendron prinophyllum</i> (syn. <i>R. roseum</i>)
rose-shell azalea
3 plants |
| 4 <i>Fothergilla major</i> large fothergilla | 12 <i>Viola blanda</i> sweet white violet
Start with 12 or more plants. They will spread by runners to form large carpets. |
| 5 <i>Gaultheria procumbens</i> wintergreen, teaberry | |
| 6 <i>Gelsemium sempervirens</i> Carolina jessamine | |
| 7 <i>Gymnocladus dioica</i> Kentucky coffee tree | |
| 8 <i>Hamamelis virginiana</i> American witch-hazel | |

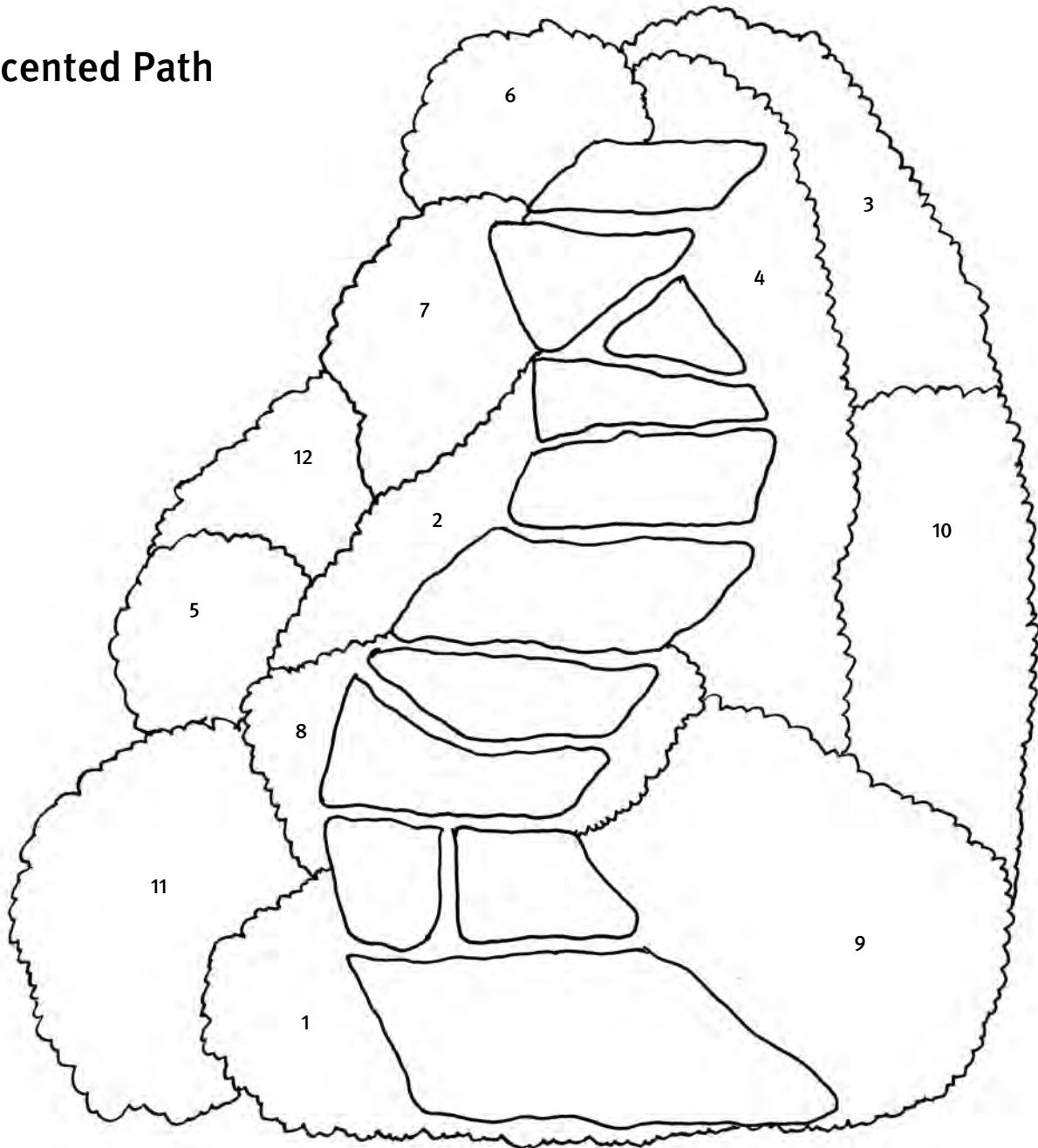
A Scented Evening Garden



The plants for this garden

- | | |
|--|---|
| 1 <i>Brugmansia × candida</i> angel's trumpet
1 plant in a container (20 inches diameter) | 7 <i>Oenothera pallida</i> pale evening primrose
5 plants |
| 2 <i>Hemerocallis citrina</i> citron daylily
5 plants | 8 <i>Osmanthus heterophyllus</i> holly osmanthus
1 plant |
| 3 <i>Ipomoea alba</i> moonflower
3 plants | 9 <i>Petunia hybrida</i> petunia hybrids
12 small plants (plugs) |
| 4 <i>Matthiola longipetala</i> subsp. <i>bicornis</i> night stock
1 group of 5 plants and 1 group of 7 (12 total) | 10 <i>Rhododendron arborescens</i> sweet azalea
1 plant |
| 5 <i>Mirabilis longiflora</i> sweet four o'clock
3 plants | 11 <i>Yucca filamentosa</i> Adam's needle
5 plants |
| 6 <i>Nicotiana × sanderae</i> 'Perfume Deep Purple'
flowering tobacco
5 plants | 12 <i>Zaluzianskya capensis</i> night phlox
2 groups of 5 plants and 1 group of 3 (13 total) |

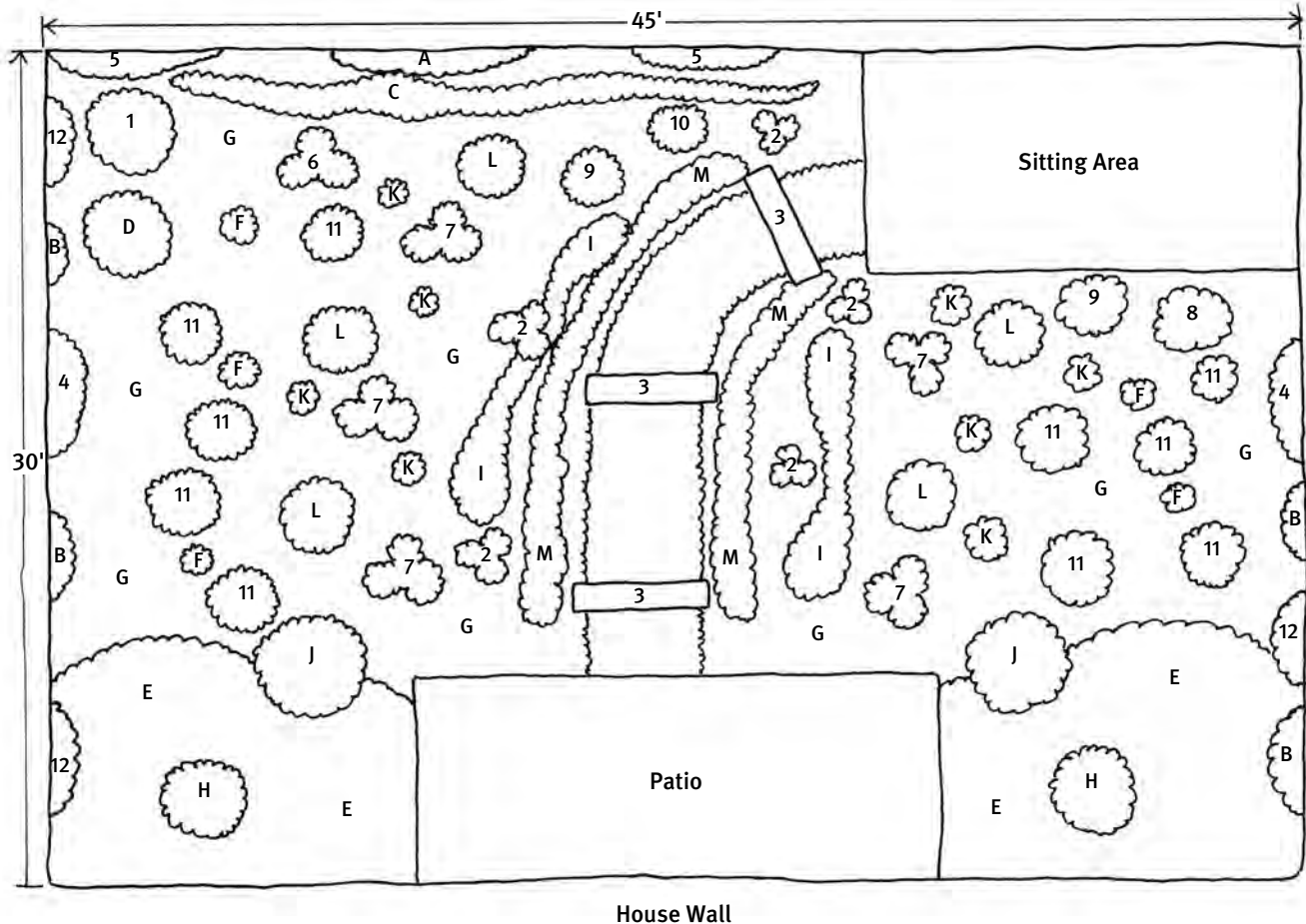
A Scented Path



The plants for this garden

- 1** *Anthemis nobilis* | chamomile
36 small plants (plugs)
- 2** *Berlandiera lyrata* | chocolate flower
6 plants; easily grown from seed saved year to year
- 3** *Comptonia peregrina* | sweet fern
3 plants
- 4** *Dennstaedtia punctilobula* | hay-scented fern
1 to 3 plants; spreads over time
- 5** *Lavandula multifida* | fern-leaf lavender
6 small plants; easily grown from seed saved year to year
- 6** *Lycopersicon esculentum* | tomato
1 small plant; easily grown from seed saved year to year
- 7** *Ocimum sanctum* (syn. *O. tenuiflorum*) | holy basil, tulsi
6 small plants; easily grown from seed saved year to year
- 8** *Origanum laevigatum* | ornamental oregano
3 plants
- 9** *Pelargonium tomentosum* | peppermint geranium
1 plant; take softwood cuttings in fall
- 10** *Perovskia atriplicifolia* | Russian sage
1 plant; divide clump in following years to spread plants around.
- 11** *Salvia sclarea* | clary sage
1 plant; easily grown from seed saved year to year
- 12** *Sporobolus heterolepis* | prairie dropseed
3 plants; grows slowly: Impatient gardeners may want to buy sizeable clumps.

A Small Fragrant Rose Garden



The plants for this garden

ROSES

- | | |
|---|--|
| 1 <i>Rosa alba</i> 'Great Maiden's Blush' — 1 plant | 7 <i>Rosa</i> 'Julia Child' — 6 plants |
| 2 <i>Rosa</i> 'Cecile Brunner' — 5 plants | 8 <i>Rosa</i> 'Madame Hardy' — 1 plant |
| 3 <i>Rosa</i> 'Climbing Westerland' — 6 plants | 9 <i>Rosa</i> 'Paul McCartney' — 2 plants |
| 4 <i>Rosa</i> 'Compassion' — 2 plants | 10 <i>Rosa</i> × <i>primula</i> incense rose — 1 plant |
| 5 <i>Rosa</i> 'Dublin Bay' — 2 plants | 11 <i>Rosa</i> 'Stanwell Perpetual' — 9 plants |
| 6 <i>Rosa</i> 'Graham Thomas' — 3 plants | 12 <i>Rosa</i> 'Sombreuil' — 3 plants |

COMPANION PLANTS

- | | |
|--|--|
| A <i>Clematis armandii</i> Armand's clematis — 1 plant | H <i>Gardenia augusta</i> 'Chuck Hayes' hardy gardenia
2 plants |
| B <i>Clematis</i> 'Evisix' (PETIT FAUCON) — 4 plants | I <i>Geranium</i> 'Roxanne' hardy geranium — 25 plants |
| C <i>Clematis recta</i> subsp. <i>purpurea</i> ground clematis
3 plants | J <i>Hamamelis</i> × <i>intermedia</i> 'Angelly' witch-hazel
2 plants |
| D <i>Clethra alnifolia</i> 'Ruby Spire' summersweet — 1 plant | K <i>Lilium formosanum</i> Formosa lily — 7 groups of 3 (21 total) |
| E <i>Convallaria majalis</i> lily-of-the-valley — 250 bulblets | L <i>Taxus</i> × <i>media</i> 'Flushing' yew — 5 plants |
| F <i>Foeniculum vulgare</i> bronze fennel — 5 plants | M <i>Teucrium chamaedrys</i> germander — 50 small plants |
| G <i>Fragaria vesca</i> woodland strawberry
50 to 60 plants | |

SPRING-FLOWERING BULBS

- | | |
|---|---|
| <i>Hyacinthus</i> 'Anastacia' — 100 bulbets | <i>Narcissus</i> 'Beautiful Eyes' and 'Sundial' — 200 bulbets total |
| <i>Iris reticulata</i> 'Pixie' — 160 bulbets | <i>Narcissus poeticus</i> var. <i>recurvus</i> — 200 bulbets |
| <i>Muscari macrocarpum</i> 'Golden Fragrance' — 250 bulbets | |